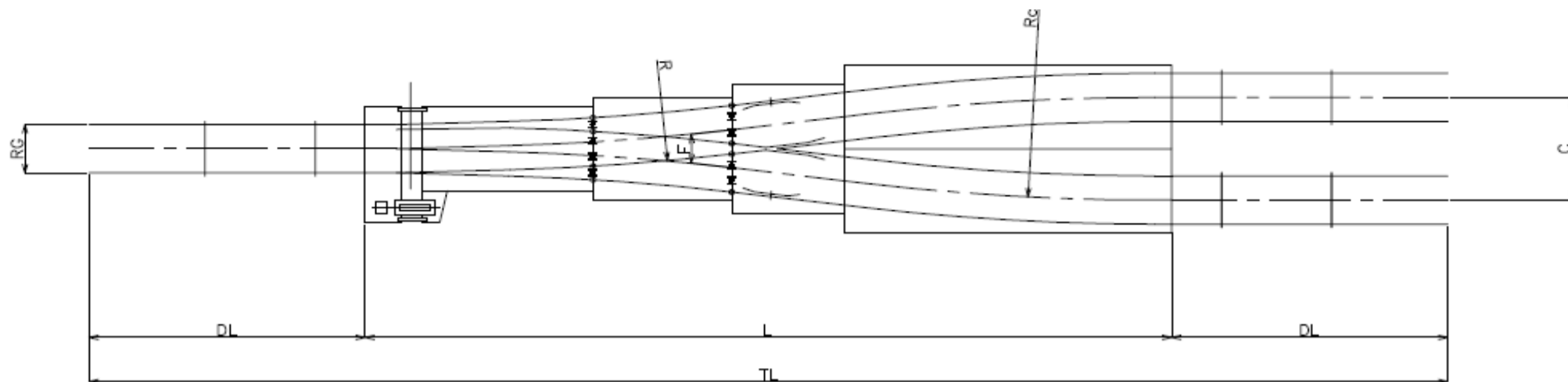
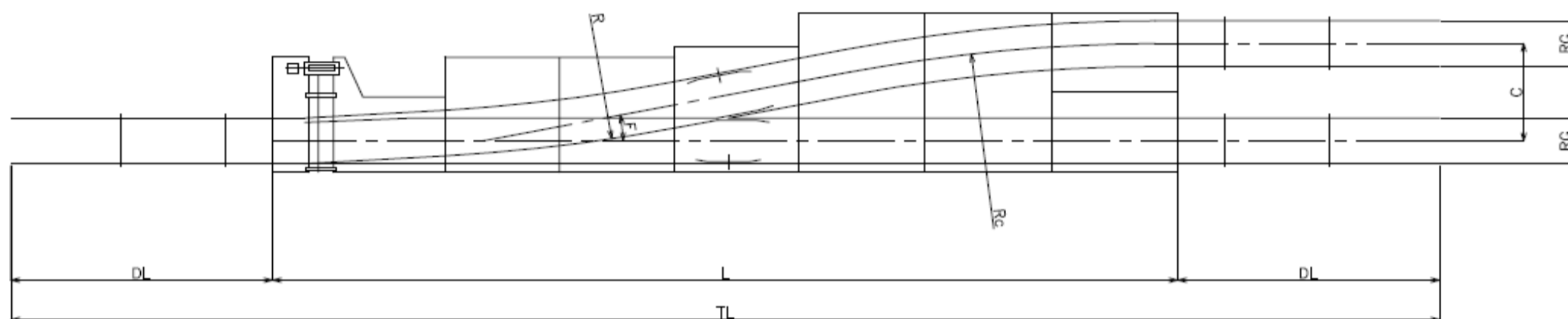


移動式両開き(Y型)分岐

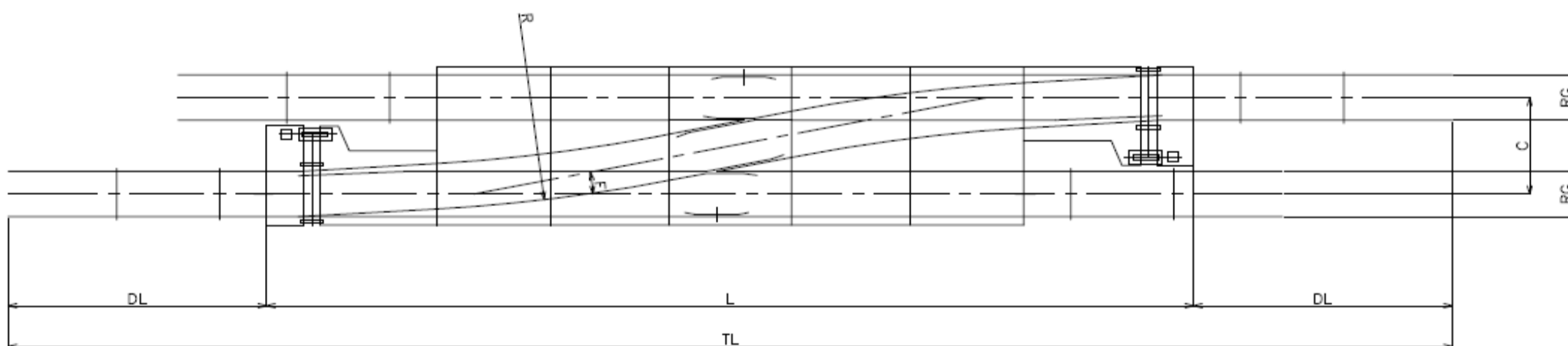


移動式片開き分岐



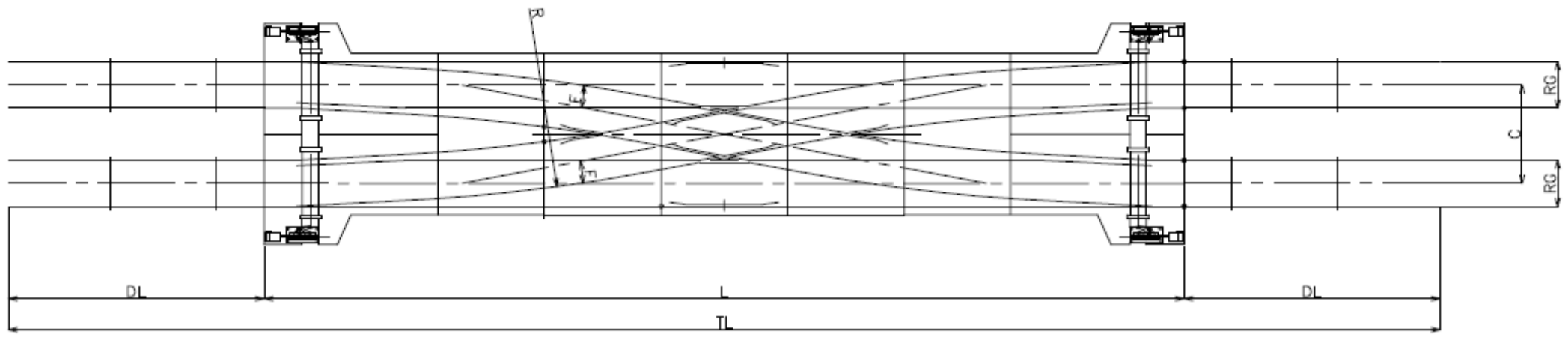
レール(Kg)	クロスNo	F	RG(mm)	DL(mm)	C(mm)	R(mm)	Rc(mm)	L(mm)	TL(mm)
22	4	14° 18'	610	4,350	1,322	21,551	21,551	9,927	18,627
			762	4,350	1,626	30,222	30,381	11,708	20,408
			914	4,350	1,930	34,740	34,740	13,585	22,285
30	4	14° 18'	762	4,700	1,645	29,372	30,000	11,858	21,258
			914	4,700	1,949	35,176	31,530	13,377	22,777
	5	11° 26'	914	4,700	1,949	31,026	31,026	16,814	26,214

移動式亘線(N型)分岐



レール(Kg)	クロスNo	F	RG(mm)	DL(mm)	C(mm)	R(mm)	L(mm)	TL(mm)
22	5	11° 26'	610	4,350	1,322	16,393	10,337	19,037
			762	4,350	1,626	25,387	14,258	22,958
			914	4,350	1,930	31,235	17,241	26,961
30	5	11° 26'	762	4,700	1,645	25,387	14,452	23,852
			914	4,700	1,949	31,026	17,435	26,835
	6	9° 32'	762	4,350	1,626			
			914	4,700	1,949	32,570	17,575	26,975
			914	4,700	1,949	32,570	19,372	28,772

固定式交叉亘線(X型)分岐



レール(Kg)	クロスNo	F	RG(mm)	DL(mm)	C(mm)	R(mm)	L(mm)	TL(mm)
22	5	11° 26'	762	4,350	1,626	25,695	14,288	22,988
	6	9° 32'	610	4,350	1,322	28,415	13,047	21,747
762			4,350	1,626				
30	5	11° 26'	762	4,700	1,645	25,387	14,452	23,852
			914	4,700	1,949			
	6	9° 32'	762	4,700	1,645	30,550	17,570	26,970
			914	4,700	1,949	32,570	19,472	28,872